

# TEAM MEETING GUIDE



# Introduction to **FIRST**® **LEGO**® League Discover

In **FIRST**® **LEGO**® League Discover, children are introduced to the fundamentals of STEM while working together to solve fun challenges and building models using **LEGO**® **DUPLO**® bricks. Students gain habits of learning, confidence, and teamwork skills along the way.

**FIRST** **LEGO** League Discover is one of three divisions by age group of the **FIRST** **LEGO** League program and serves the youngest children. This program inspires young people to experiment and grow their confidence, critical thinking, and design skills through hands-on STEM learning. **FIRST** **LEGO** League was created through an alliance between **FIRST**® and **LEGO**® Education.



## Welcome to **CARGO CONNECT**™

Welcome to the **FIRST**® **FORWARD**™ season. This year's **FIRST** **LEGO** League Discover Challenge is called **CARGO CONNECT**™. Children will learn about how packages are transported, sorted, and delivered to their destinations. See page [5](#) for a description of the **CARGO CONNECT**™ Challenge that you can share with your children. A scaled-up version of this story can also be found on the mat.

Children will think and behave like designers and engineers, developing their ability to observe, question, gather information, and ask more questions.

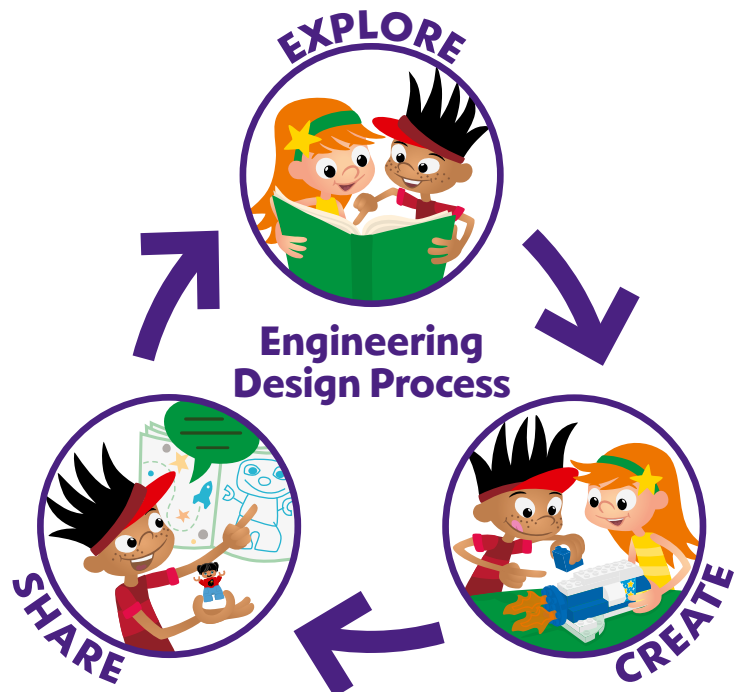
During each session, they will experience the engineering design process. There is no set order for this process, and they may go through each part several times in a single session. This means that during a

session, children will be exploring the theme and ideas, creating solutions, testing them, iterating and changing them, and then sharing what they've learned with others.

## Working in Teams

Children work together in teams of four using pieces from **STEAM** Park by **LEGO**® Education and a **CARGO CONNECT** Discover set. They will collaborate and communicate to build, learn, and play together.

Children should be encouraged in every session to work with their teammates, listen to each other, take turns, and share ideas and pieces.



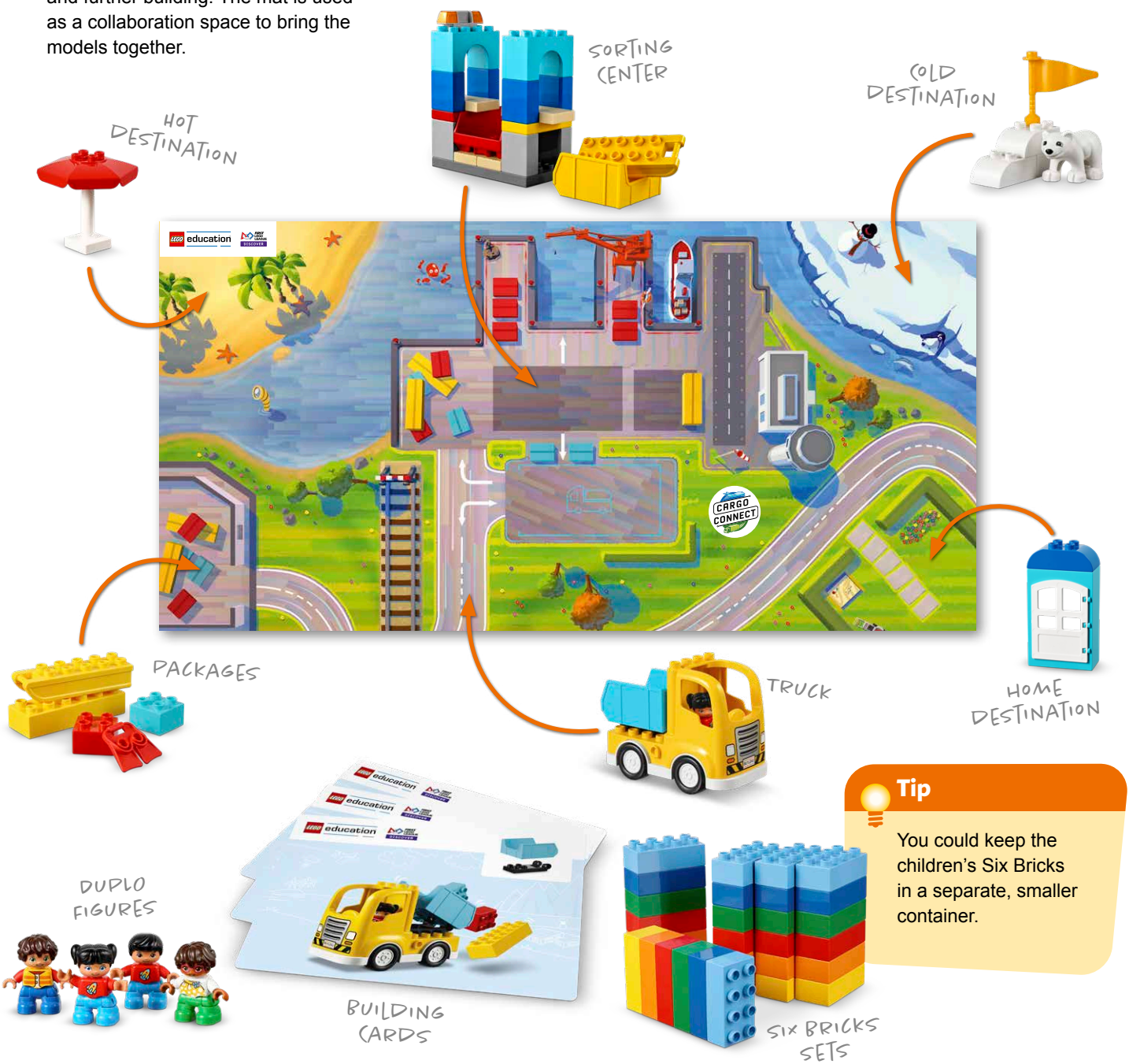
# What Do You Need?

## Discover Set (serves up to 4 children)

The Discover set consists of the CARGO CONNECT<sup>SM</sup> Discover model (truck, packages, sorting center, and destinations), LEGO<sup>®</sup> DUPLO<sup>®</sup> figures, Six Bricks sets, mat, and building cards.

The Discover model is intended to help children connect to the theme and provide a starting point for discussions and further building. The mat is used as a collaboration space to bring the models together.

Each Discover set includes five sets of Six Bricks for use in the classroom. There are enough sets to give one to each child, plus one for the teacher. Each child will need one of each of the six colored bricks. The Six Bricks in this set are in addition to the Six Bricks in the Discover More set that goes home.



**Tip**  
You could keep the children's Six Bricks in a separate, smaller container.

# Session Layout

	Warm-Up (Six Bricks)	Task 1 (Explore)	Task 2 (Create)	Task 3 (Share)
<b>Session 1</b> Let's Discover	Discover Six Bricks I	Transportation	Explore STEAM Park	Share Prompt
<b>Session 2</b> Let's Deliver	Discover Six Bricks II	Challenge	Trucks and Vehicles	Engineering Notebook Page
<b>Session 3</b> Let's Transport	What Can You Build?	Mat Overview	Load and Unload Packages	Share Prompt
<b>Session 4</b> Let's Sort	Cargo Space	Mat Features	Sort Packages	Engineering Notebook Page
<b>Session 5</b> Let's Innovate	Cargo Train	Mat Areas	Innovate with Moving Parts	Share Prompt
<b>Session 6</b> Let's Explore Jobs	Moving Packages	Transportation Jobs	Jobs, Tools, and Equipment	Engineering Notebook Page
<b>Session 7</b> Let's Use Ramps	Build the Picture	Ramps and Vehicles	Ramps and Vehicles	Share Prompt
<b>Session 8</b> Let's Improve	Air and Water	Transportation Needs	Improve Package Journey	Engineering Notebook Page
<b>Session 9</b> Let's Connect	Build a Bridge	Reflection	Combine Ideas	Share Prompt
<b>Session 10</b> Let's Celebrate	Final Celebration Event!			

# Session 1: Let's Discover

As you go through these sessions, don't worry if you don't know all the answers – and remember, there is no such thing as failure! Also for the children, know that they will make mistakes and iterate on their designs.


EACH SESSION PROVIDES A DEEPER CONNECTION TO SUPPORT YOU AND YOUR TEACHING.

EACH SESSION HAS A BIG QUESTION THAT CAN BE SHARED TO FRAME THE SESSION.

## What can we build with STEAM Park related to transportation?

### Six Bricks Warm-Up (15 minutes)

**Discover Six Bricks I** (see Appendix for full activity)

The children will use the Six Bricks both in the classroom and at home with the Discover More set to learn new skills and explore new ideas. 

### Task 1 (10 minutes)

Introduce the theme of transportation. Have a discussion on these questions to start the session and explore the children's understanding. Recognize times in the school day when the children engage in transportation activities.

To encourage language use, you could ask them:

- What is **transportation**?
- What is a **destination**?
- How are people and things transported?

### Task 2 (25 minutes)

Have the children build using the different pieces in STEAM Park. Encourage them to play freely and build anything they want, using their imaginations and discovering the pieces' **functions**. Help them identify pieces that could relate to transportation and vehicles.

### Task 3 (10 minutes)



Have the children share and explain what they built and how the pieces they identified relate to transportation. All the children's builds will be correct, and there is no one right answer to these sessions.

### Outcomes

The children will play with STEAM Park, building creatively and trying new things.

The children will identify LEGO® elements that relate to transportation.

### Tips

-  Send home the letter (see page 10) with the Discover More set with each child.
-  Check out the [Functional Elements](https://education.lego.com/en-us/lessons?grades=PreK-K) lesson ([education.lego.com/en-us/lessons?grades=PreK-K](https://education.lego.com/en-us/lessons?grades=PreK-K)) for examples.



### Key Vocabulary

destination, function, transportation

### Playful Learning in Action

The children will use **discovery** to explore new ideas with STEAM Park. They will **wonder** and **question** what the pieces do.



# Transportation Journey



LEGO, the LEGO logo, DUPLO and the DUPLO logo are trademarks of the/sont des marques de commerce du/son marcas registradas de LEGO Group. ©2021 The LEGO Group. All rights reserved/Tous droits réservés/Todos los derechos reservados.

FIRST®, the FIRST® logo, and FIRST® FORWARD<sup>SM</sup> are trademarks of For Inspiration and Recognition of Science and Technology (FIRST). LEGO® is a registered trademark of the LEGO Group. FIRST® LEGO® League and CARGO CONNECT<sup>SM</sup> are jointly held trademarks of FIRST and the LEGO Group.

©2021 FIRST and the LEGO Group. All rights reserved. 10082102 V1